

MAP LABEL	AIDS TO NAVIGATION	PLANE COORDINATES		LATITUDE	LONGITUDE
		X	Y		
R32	DBN-32 (10/21)	808380	1831344	27°56'48.30"	80°31'36.01"
G33	LS-33 (10/21)	809357	1831376	27°56'44.66"	80°31'31.83"
R34	DBN-34 (10/21)	809242	1831278	27°56'39.85"	80°31'33.02"

GRAPHIC SCALE
100' 0 100' 200'
NOTES:
1. REFER TO SURVEY NO. 21-265.
2. SEE SHEET NO. 1 FOR SURVEY NOTES.

MAP LABEL	AIDS TO NAVIGATION	PLANE COORDINATES		LATITUDE	LONGITUDE
		X	Y		
G-37	DBN-37 (10/21)	810417	11307569	27°55'43.12"	80°31'20.25"
R-38	LE-38 (10/21)	810403	11306852	27°55'41.02"	80°31'20.45"
G-39	DBN-39 (10/21)	810836	11306548	27°55'38.00"	80°31'15.63"

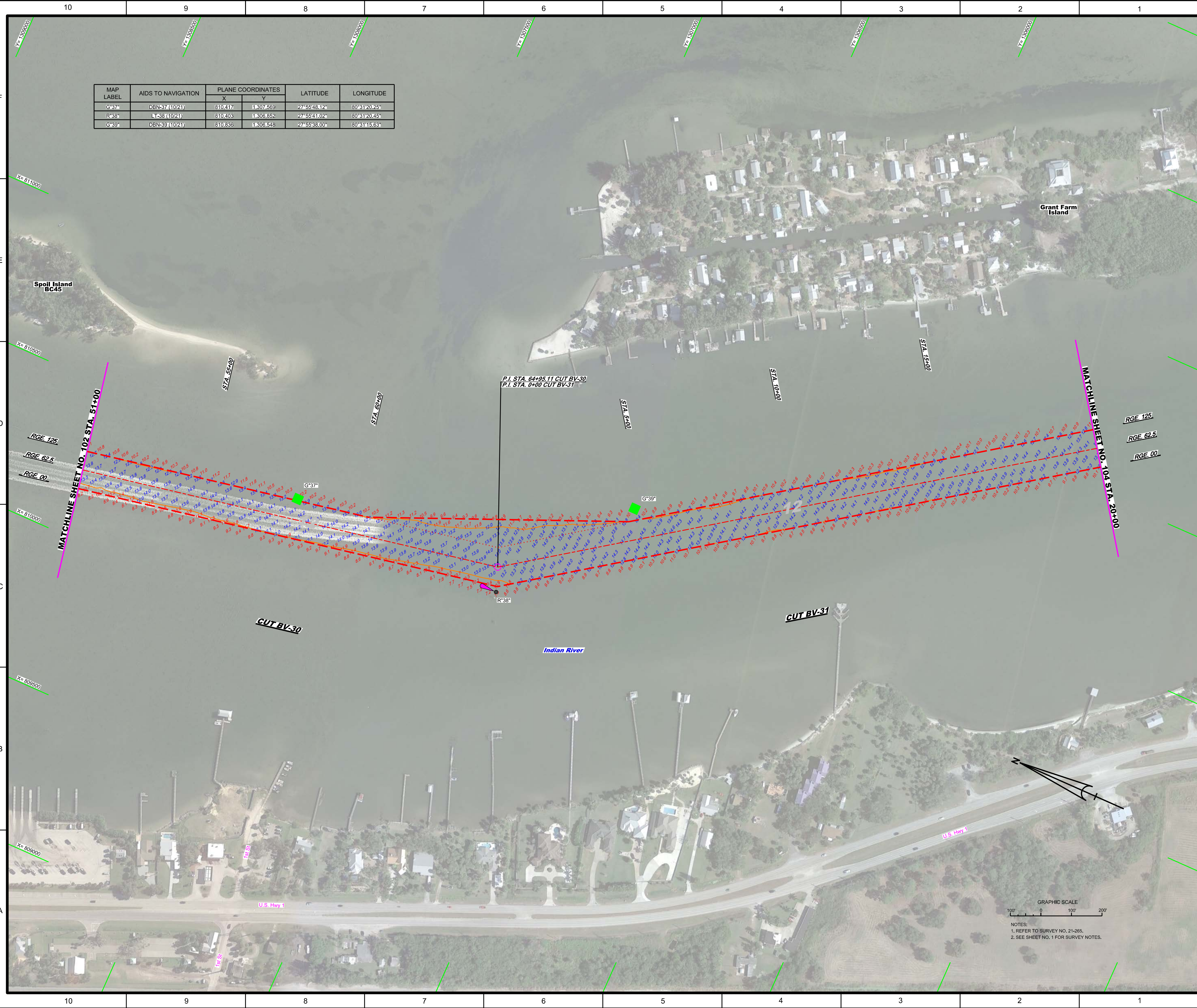
US Army Corps of Engineers
Jacksonville District
SAFETY ON THIS JOB
DEPENDS ON YOU

DEPARTMENT OF THE ARMY
JACKSONVILLE DISTRICT, CORPS OF ENGINEERS
JACKSONVILLE, FLORIDA

Checked By: GHR
Designed By: WRM
Drawn By: WRM
File No: W12355-00-000-000
Date: OCT 2021

INTRACOASTAL WATERWAY
JACKSONVILLE TO MIAMI, FLORIDA
BREVARD COUNTY
HYDROGRAPHIC EXAM SURVEY FY21
12-FOOT PROJECT
STA. 51+00 CUT BV-30 THRU STA. 20+00 CUT BV-31
PLAN

Scale: AS SHOWN
Drawing no.
103
SHEET 103 OF 111



GRAPHIC SCALE
0 100 200
NOTES:
1. REFER TO SURVEY NO. 21-265.
2. SEE SHEET NO. 1 FOR SURVEY NOTES.

